

ILISIMATUSARFIK



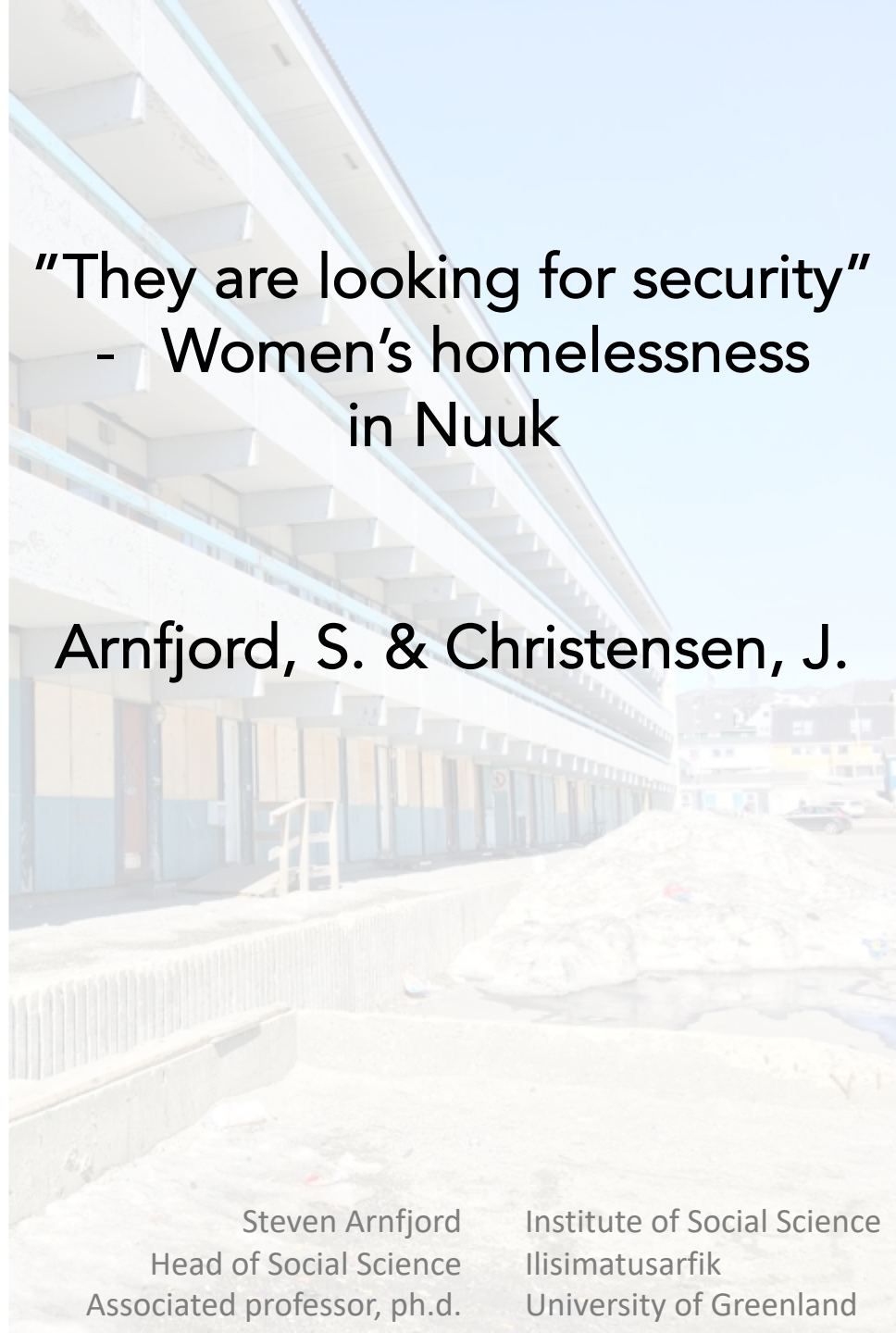
University of Greenland

"They are looking for security"
- Women's homelessness
in Nuuk

Arn fjord, S. & Christensen, J.

Steven Arn fjord
Head of Social Science
Associated professor, ph.d.

Institute of Social Science
Ilisimatusarfik
University of Greenland





The Greenlandic Women's assembly in 1975 Stated that:

In a lot of cases the forced removal policies where to blame for a lot human rootlessness



The study

Literary review

Talking to NGO workers

Talking to women

Participatory observations





A literary review – showed testimonies of prior focus on marginalized women

1976 The first shelter aimed at women was started by YWCA

1987 The municipality of Nuuk took over the shelter

1998 It was concluded that running the shelter was too costly. At the time it had 10 residents

2000 The media attention increased

2010 Greenland saw the first public report on homelessness

2012 Salvation Army opens in Nuuk

2013 the second public report on homelessness is published

2015 Social Dynamics of Homelessness is launched





Current “numbers” around homelessness

Not verified numbers (it is a public count but with an unknown methodology)

2017 The Greenlandic government put out a nation wide number at: 878

2018 In Nuuk three NGO's estimates that there are: 350

2015 Our research estimated that we had: 500 (country wide) 250 (Nuuk)

A P.I.T. Count for Nuuk is planned in 2020...

The man / woman ration is 5:1 (20% of people struck by homelessness are women)





No Real Language to Describe Women's Needs

Women are double stigmatized as women and as homeless.

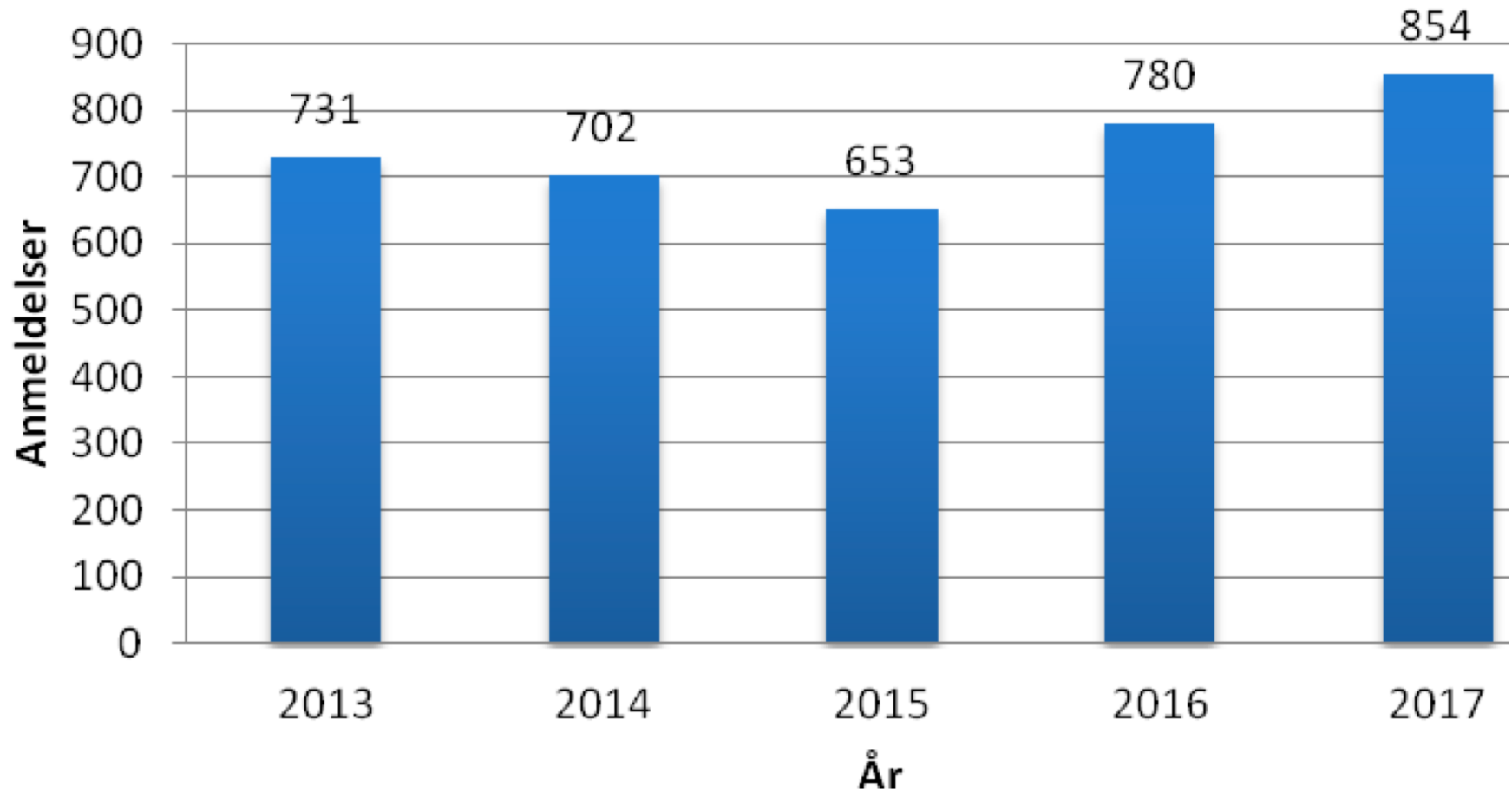
They are currently invisible in the current stats around homelessness.





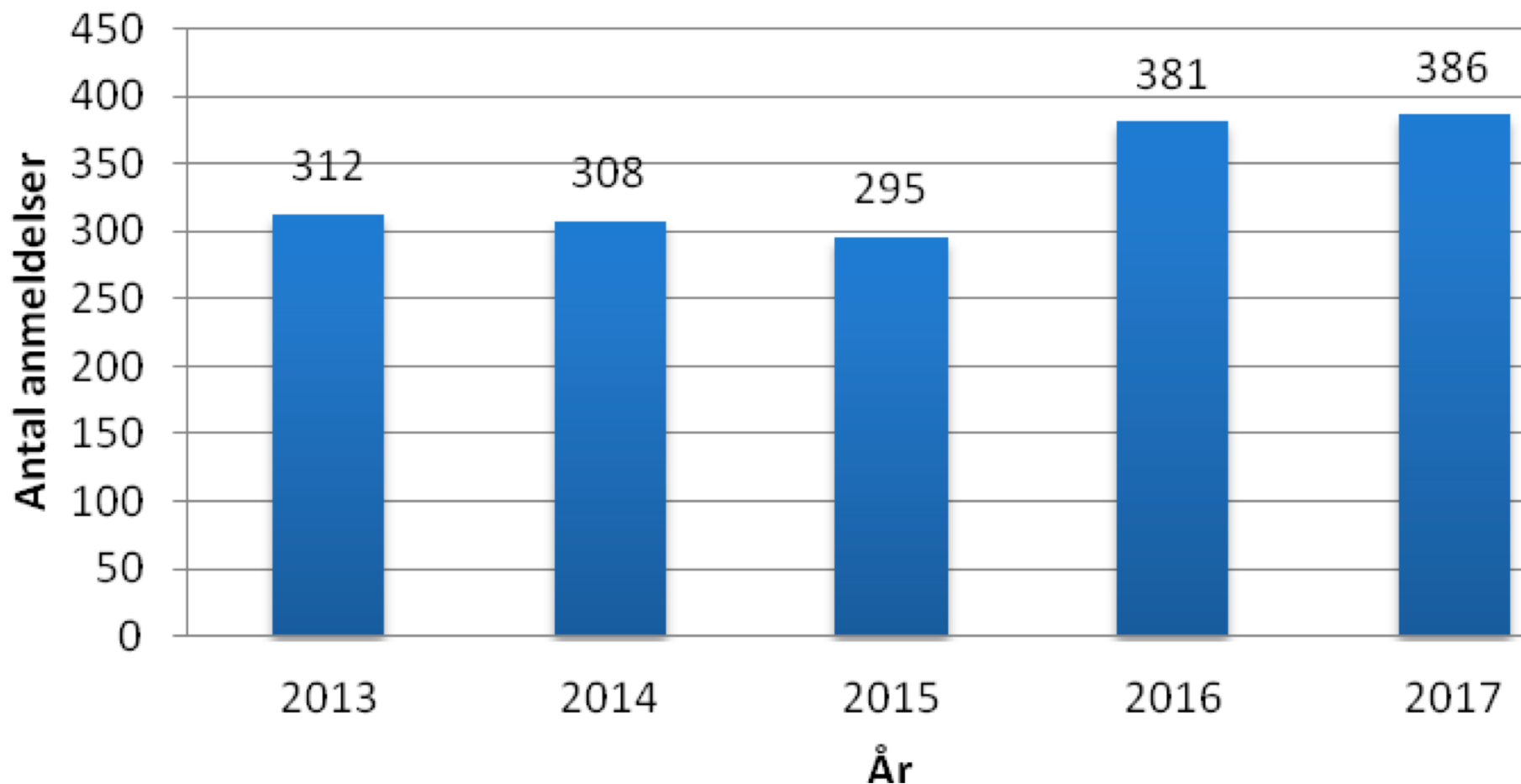
On top there is a rise in threat level towards women

Reported violence



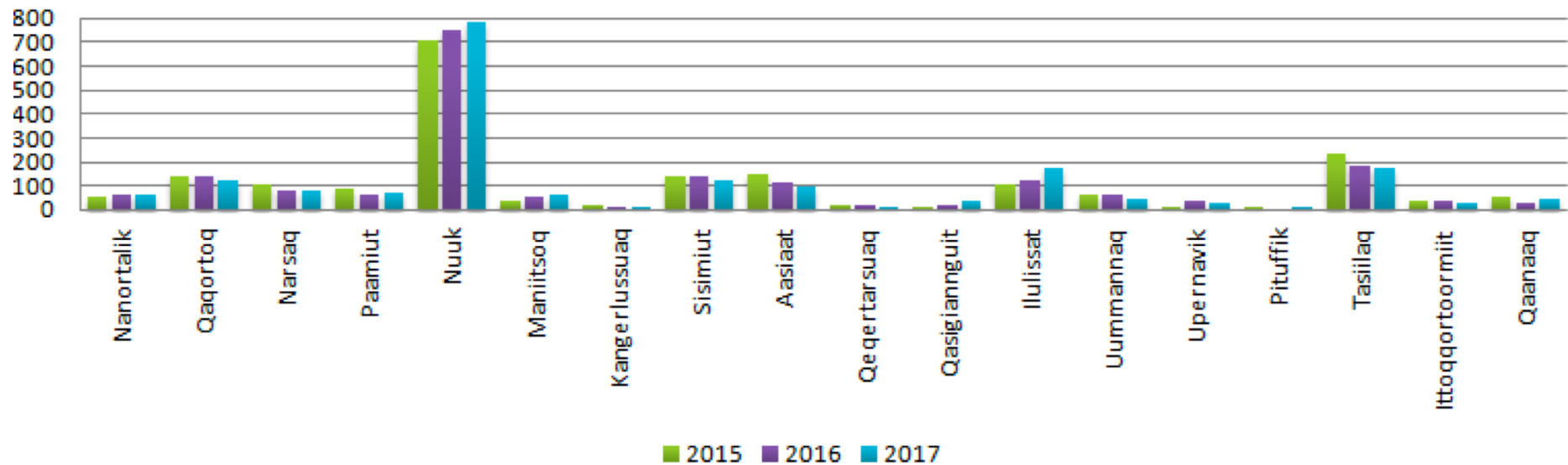
A rise in threat level towards women

Reported sexual violence



A rise in threat level towards women

Reports on domestic violence





Voices from the field

From our field studies and through interviews we slowly gained trust and were allowed to listen to testimonies of womens lived experiences



Voices from the field (II)

They need close relationship with men in order to feel safe.
I've worked in Denmark where we saw some women on their own.
Here (Greenland) we hardly see women coming in to the day
shelter without a man.

They are always with a man.
We are also seeing very young women.

(NGO Worker)



Voices from the field (III)

I'm here (In Nuuk) without a home with with two kids for six months. The kids were with family but I couldn't always stay there. I was welcome, but I was a guest & there was tension. My kids needed a place.

I was in the mountains a lot and had dark thoughts.

(Former Homeless Mother of 3)



Future policy recommendations

- 1) Women's voices need to be revitalized
- 2) Men need break the tabu around domestic violence
- 3) Social work should advocate marginalized women's rights
- 4) Social politics should include a focus on women



Qujanaq!
Thank you!

E-mail: star@uni.gl

